

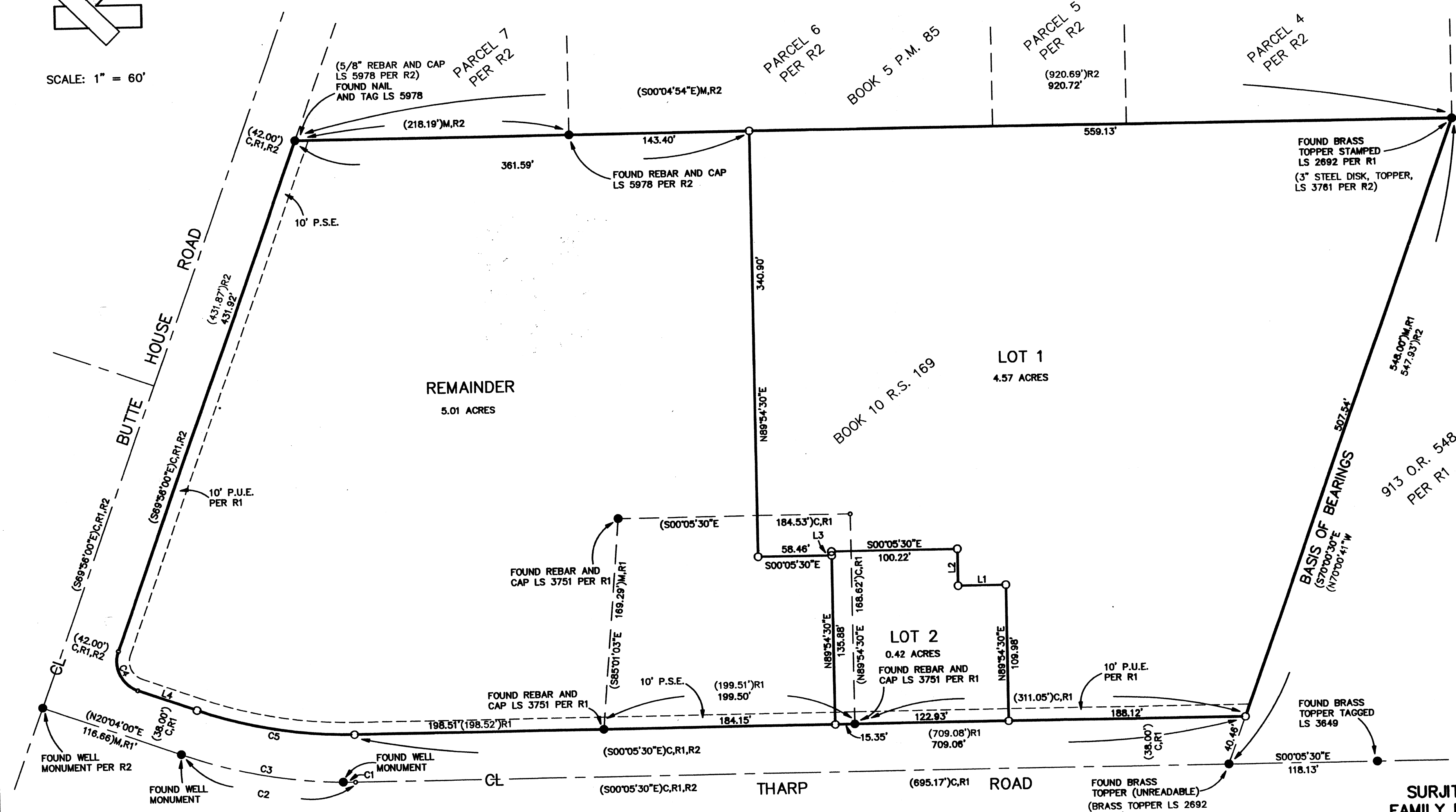
SCALE: 1" = 60'

LEGEND

- FOUND MONUMENT AS NOTED
- SET 3/4" IRON PIPE TAGGED LS 6050
- CALCULATED POINT NOTHING FOUND OR SET
- M INDICATES MEASURED DATA THAT MATCHES RECORD DATA
- C INDICATES CALCULATED DATA THAT MATCHES RECORD DATA
- R1 RECORD DATA PER BOOK 10, R.S. PAGE 169
- R2 RECORD DATA PER BOOK 5, P.M. PAGE 85
- () EMBRACES RECORD DATA OR CALCULATED AND/OR MEASURED DATA THAT MATCHES RECORD DATA

EASEMENT NOTES:

1. SERIAL NUMBER **2008-0007260**
 CREATES A PUBLIC UTILITY, INGRESS, EGRESS, PARKING, DRAINAGE, LANDSCAPING AND MAINTENANCE THEREOF EASEMENT OVER LOTS 1, 2, AND THE REMAINDER SHOWN HEREON, EXCEPTING THEREFROM ALL THAT LAND LYING WITHIN THE FOOTPRINTS AND 2.5 FEET OUTSIDE THE FOOTPRINTS OF THE BUILDINGS AND APPURTENANT STRUCTURES FOR THE PROJECT SHOWN HEREON.



PARCEL MAP AREA - 9.99 ACRES

PARCEL MAP No. 1140
 CITY OF YUBA CITY

SURJIT K. TUMBER TRUSTEE OF THE TUMBER FAMILY LIVING TRUST DATED DECEMBER 18, 1992

A PORTION OF LOTS 8 AND 9 OF THE "HARTER TRACT NO. 2" FILED IN BOOK 2 OF SURVEYS, AT PAGE 41, SITUATE IN SECTION 16, TOWNSHIP 15 NORTH, RANGE 3 EAST, MOUNT DIABLO MERIDIAN

COUNTY OF SUTTER - STATE OF CALIFORNIA

NorthStar
ENGINEERING

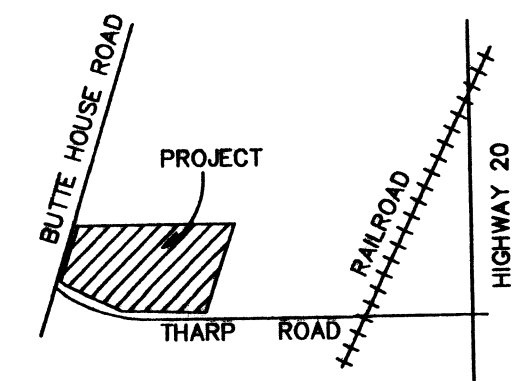
CIVIL ENGINEERS • PLANNERS • SURVEYORS
 111 MISSION RANCH BLVD., SUITE 100 • CHICO, CALIFORNIA 95926
 (530) 893-1600 FAX (530) 893-2113

BASIS OF BEARINGS:

THE BASIS OF BEARINGS OF THIS MAP IS THE NORTH LINE OF "913 O.R. 548" AS SHOWN ON R1 EVIDENCED BY MONUMENTS SHOWN HEREON AS FOUND. THE BEARING OF SAID LINE BEING S70°00'30"E PER R1.

LINE	BEARING	DISTANCE
L1	N00°05'30"W	38.08'
L2	N89°54'30"E	29.08'
L3	N89°54'30"E	3.18'
L4	S20°04'00"W	49.66'

CURVE	RADIUS	DELTA	LENGTH
C1	400.00'	0°02'21"	0.27'
C2	400.00'	20°09'30"	140.73'
C3	400.00'	20°07'09"	140.48'
C4	25.00'	90°00'00"	39.27'
C5	382.00'	20°09'30"	127.36'



LOCATION MAP
 NOT TO SCALE